

THE HOLE STORY

A

SECTION THROUGH ATRIUM



Starting two floors above street level, a glass-clad open-roofed atrium rises and twists through the centre of the building, opening out towards the north-west elevation to allow daylight into flats on the upper floors through a fretwork screen.

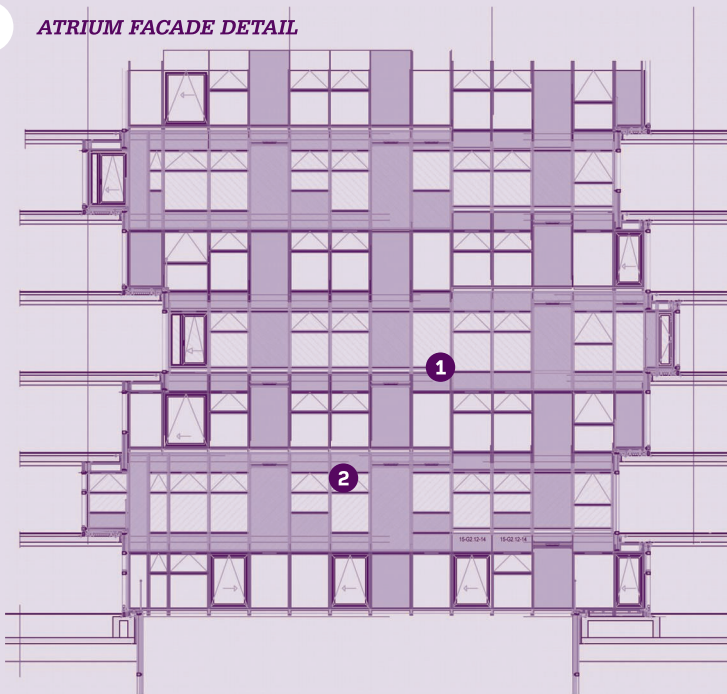
The atrium space was created by casting a six-sided hole into the centre of each floor slab. These rotate and shift in

position on successive floors (A).

The exposed soffits and ledges (1 and 2) created by the shifts in position will be clad in bright coloured aluminium panels in line with the architect's concept of jewels within a jewellery box. Where a ledge or soffit tapers to zero, tricky detailing was required in the concealed framework of overlapping panels to

B

ATRIUM FACADE DETAIL



ensure a neat junction.

The apartments (C) feature a cantilevered glass balustrade (3) with unitised cladding panels above and below (4). The glazed walls (5) are fitted within the transoms and mullions of the unitised cladding system in a sub-frame. Individual panes of glass are bonded using high-strength adhesive tape to create crisp and deep shadow gaps.

C

SECTION THROUGH APARTMENT

