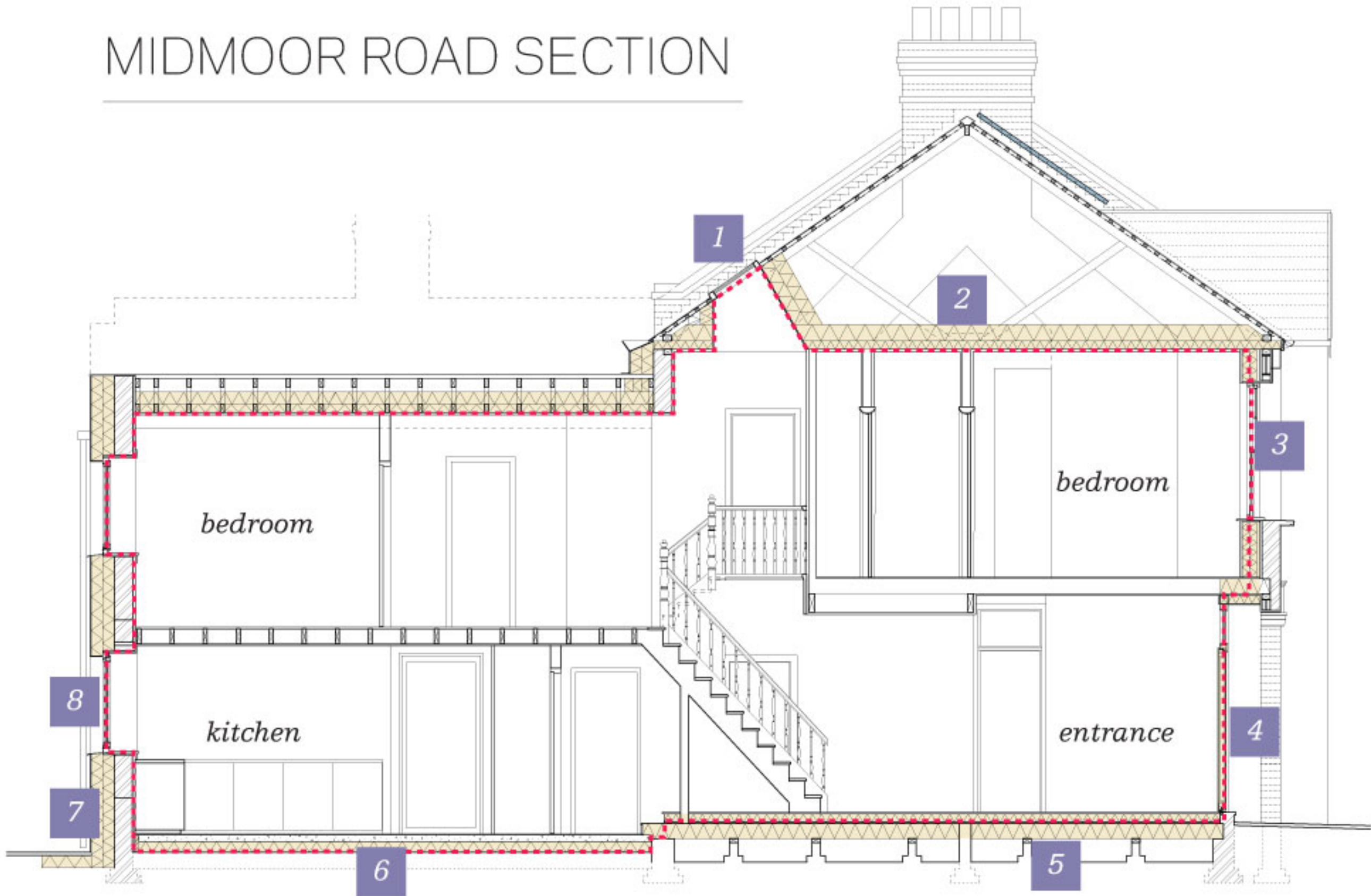


MIDMOOR ROAD SECTION



Key to the low energy refurbishment is a high performance thermal envelope. Here's how they're making it happen

- 1) Triple glazed rooflight, U-value $0.9\text{W/m}^2/\text{K}$
- 2) Insulated loft, U-value $0.09\text{W/m}^2/\text{K}$
- 3) Double glazed sash windows, U-value $1.9\text{W/m}^2/\text{K}$
- 4) Passivhaus rated door, U-value $1.0\text{W/m}^2/\text{K}$
- 5) Insulated suspended floor, U-value $0.12\text{W/m}^2/\text{K}$
- 6) Insulated floor slab, U-value $0.15\text{W/m}^2/\text{K}$
- 7) Externally insulated wall, U-value $1.1\text{W/m}^2/\text{K}$
- 8) Triple glazed windows, U-value $0.9\text{W/m}^2/\text{K}$